

# Proven Capability for Offshore Installation

## Heavy Lift-cum-Pipelay Vessel LTS3000



**L&T Hydrocarbon**



LTS3000 – from L&T Sapura is helping EPC contractors execute complex offshore assignments while meeting tough deadlines in oil & gas fields across multiple geographies. The vessel has a blend of advanced facilities and experienced technicians – backed by a commitment to delivery on time, every time.

## Technical Specifications

### CLASSIFICATION / REGISTRATION

ABS Notation: +A1(E) +AMS Heavy Lift-cum-Pipelay Vessel  
(DPS-1) IRS Notation: SUL (Sarvoutam Langer), IY (Indian Yantra)

### HULL

Length Overall	161.53m
Length between Perpendiculars	155.73m
Breadth Molded	37.80m
Depth at side to Main Deck	15.00m
Depth at side to Freeboard Deck	9.10m
Minimum Operational Draught	4.00m

### PROPULSION

Azimuth Thrusters	2 x 2400 kW
Bow Tunnel Thruster	1 x 1250 kW
Speed	6 – 8 knots

### POWER GENERATION

Main Diesel Generators	3 x 2600 kW
Emergency and Harbour Generator	1 x 1000 kW

### MOORING SYSTEM

10-point mooring system, consisting of 6 anchors forward and 4 aft. The ten anchors weigh 12.5 MT each complete with pigtails, pendant wires and buoys. The system is well-integrated with computer navigation and positioning systems.

Dimensions	10 x 63 mm (2.5") x 2000 m (Length)
Min. Break Strength	2460 kN
Winch Speed	36 m/min
Winch Pull	150 tonnes

### ACCOMMODATION

Quarters accommodate 290 people. All cabins have en suite shower and lavatories.

### COMMUNICATION AND NAVIGATION

- Satellite communication system, Fleet broadband, VHF, UHF, SSB, FM and RADAR (X & S Band)
- Gyrocompass (combined with DP)
- Integrated CCTV System
- Global Maritime Distress Safety System (GMDSS)
- Engine Alarm System (EAS)
- Automatic Identification System (AIS)
- Long Range Identification and Tracking (LRIT)
- Electronic Chart Display and Information Systems (ECDIS)
- Computer LAN network with Internet

### MEMBERSHIPS

IMCA: International Maritime Contractors Association  
IPLOCA: International Pipeline & Offshore Contractors Association

### CRANES

#### MAIN CRANE

Amclyde Model PC-42 HVY fully revolving post crane

#### BOOM LENGTH

Main Block	71.66 m (235ft)
Auxiliary Block	82.33 m (270ft)
Whip Block	91.48 m (300ft)

#### HOOK CAPACITY

Main Hook, revolving	2722 mt @ 27 m radius
Main Hook, fixed over stern	2722 mt @ 27 m radius
Auxiliary Hook, revolving	725 mt @ 53 m radius
Whip Hook, revolving	110 mt @ 95 m radius
Personnel Lifting (as per API 2C, 6 <sup>th</sup> Edition)	5 mt @ 72 m radius

DECK CRANES: Pedestal Crane, Diesel Hydraulic Drive

Model: 20/10 K – 2 x 50 mt @ 29 m

Boom Length-Main Hook: 46.8 m, Auxiliary Hook: 50 m

### PIPE LAYING EQUIPMENT / S LAY

Coated Pipe Outer Diameter Capacity	6" to 60"
Pipe Tensioner	2 x 100 MT

### PIPE LAY WORK STATIONS

Welding: 6, NDT: 1, Joint Coating: 2, Repair: 1

### STINGER

Shallow Water S Lay Stinger, 1 No. Stinger Control Station

### DAVITS

6 Pipeline Davits with rated capacity of 50 MT each

### A&R WINCHES

1 x 200 T (Maximum Tension)

Speed: 25 m/min

Drum Capacity: 1600 m of 88 mm rope

### HELIDECK

For maximum weight of 12.8 MT as per CAP 437

### DECK CAPACITY

Deck Load	10 t/sq.m
-----------	-----------

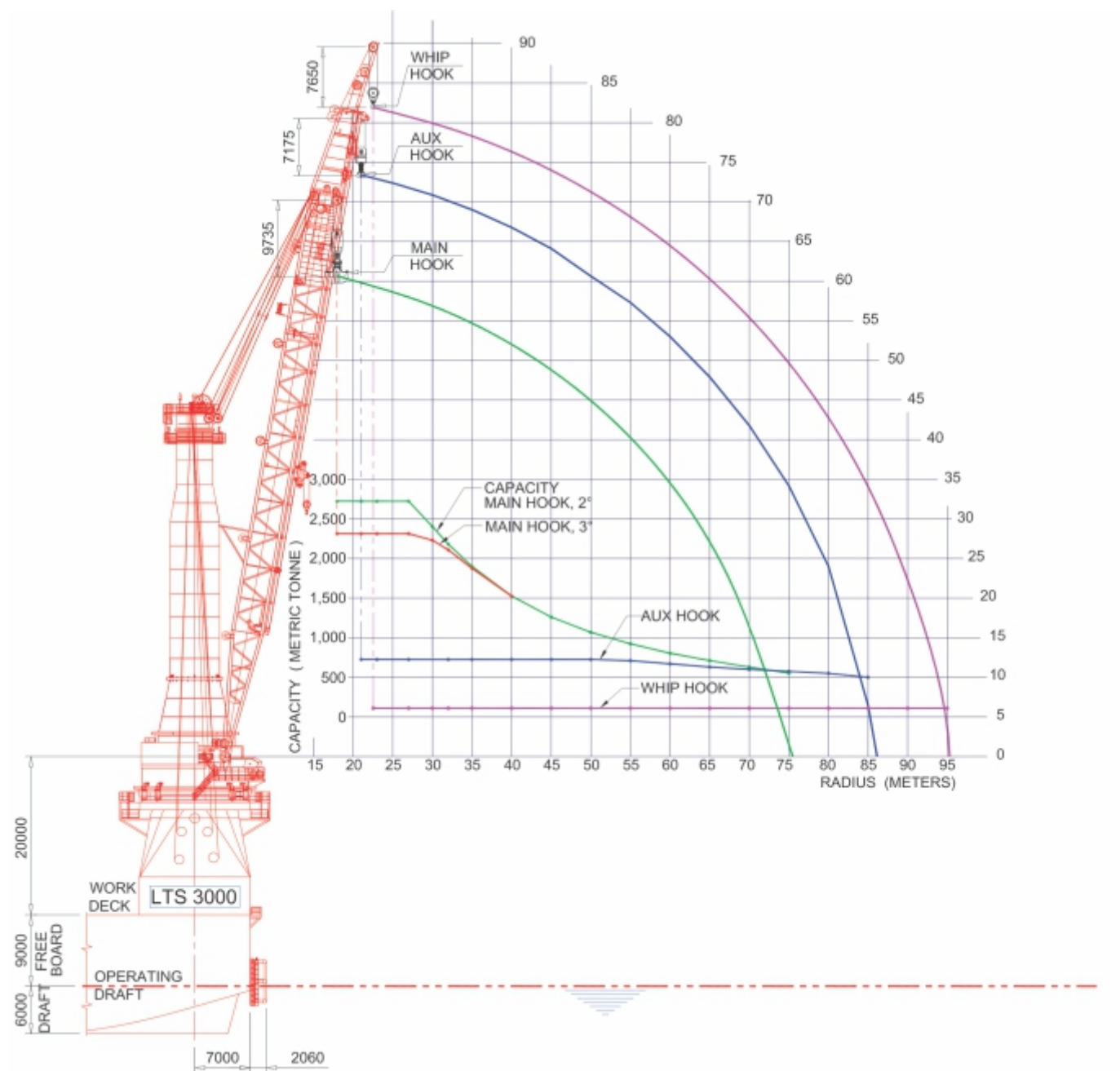
### TANK CAPACITY

Water Ballast	11686 Tonnes
Fuel Oil	2334 Tonnes
Fresh Water	3064 Tonnes
Lubricating Oil	77 Tonnes
Technical Fresh Water	1600 Tonnes

### SAFETY EQUIPMENT

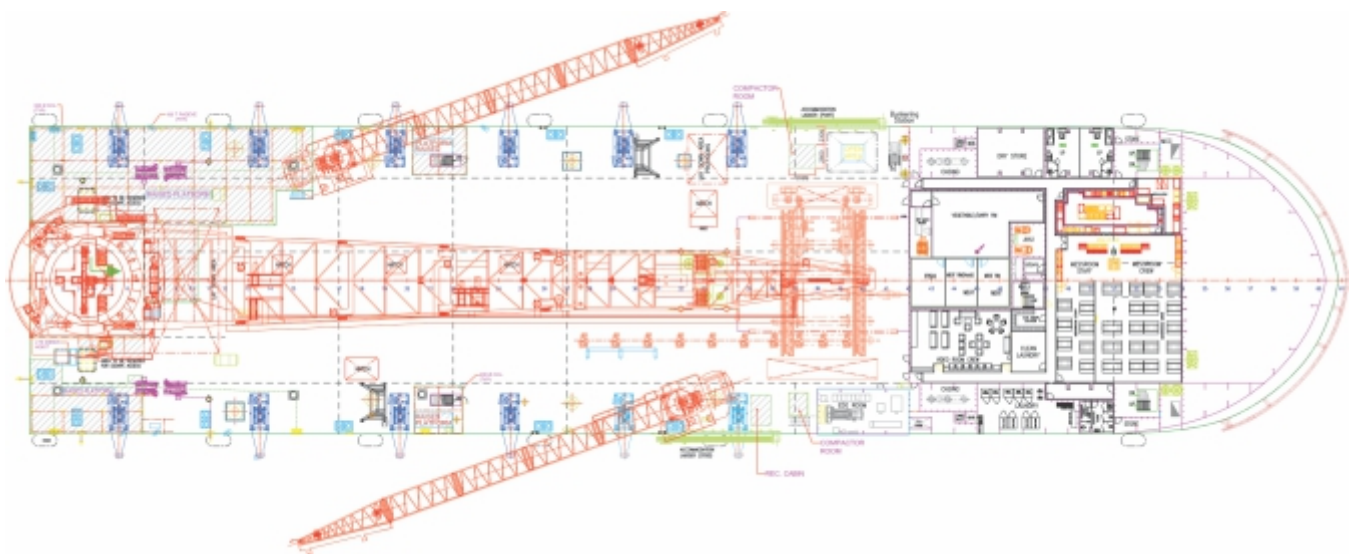
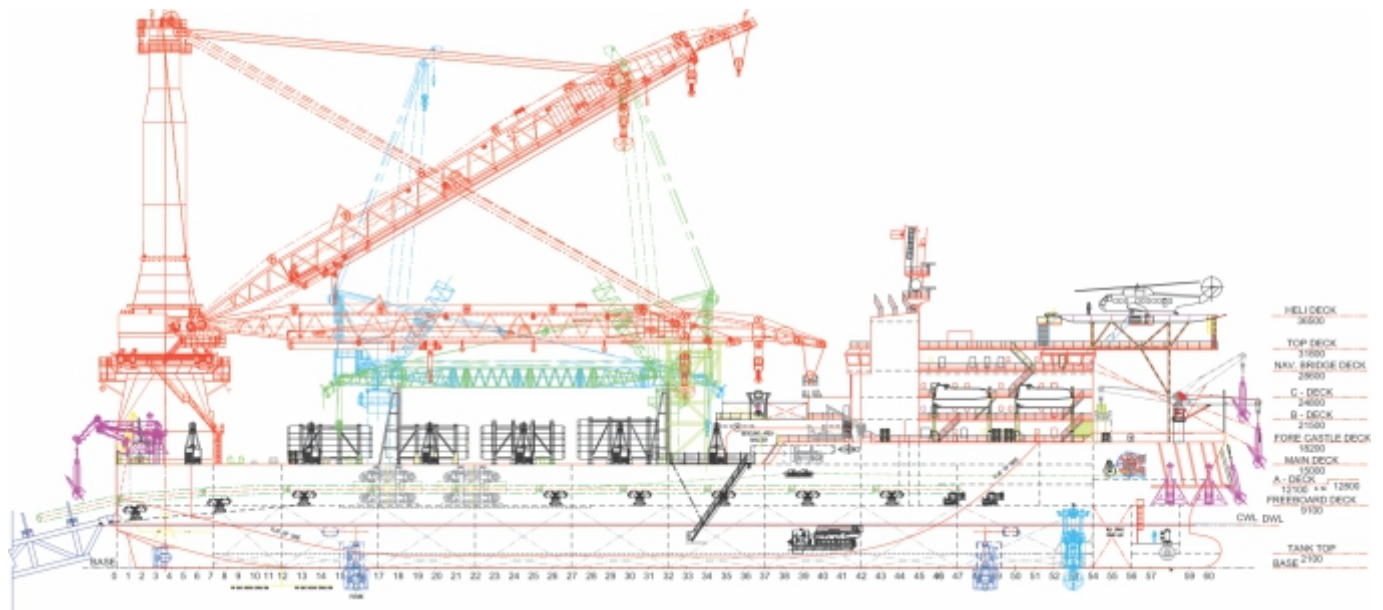
Life-saving and fire-fighting equipment onboard are as per vessel Class requirements.

L&T Sapura Shipping Private Limited is a joint venture of Larsen & Toubro Limited (India's largest engineering, technology and construction company) and SapuraKencana Petroleum Berhad (a leading Malaysian oil and gas services provider). It is part of L&T Hydrocarbon Engineering Limited.



NOTE: Main and Auxiliary ratings include 10% DAF and Whip rating includes 30%DAF

Crane Chart



General Layout

## MAJOR PROJECTS COMPLETED

<b>Project</b>	Transportation and Installation of Offshore facilities of East Piatu CPP Platform Phase - II
<b>Client</b>	New Field Peninsula, Malaysia
<b>Installations Completed</b>	<p><b>Deck Modules:</b> CPP Topside (2719 MT), U-301 Module (115.4 MT), U-321 Compressor Module (115.4 MT), LQ Module (741.3 MT), U 360 Mercury Removal Unit (41.4 MT)</p> <p>LTS3000 executed lift of CPP topside weighing <b>2719 MT</b> - close to maximum lifting capacity at East Piatu in Malaysia.</p>



<b>Project</b>	MHN Process Platform Project
<b>Client</b>	ONGC, India
<b>Installations Completed</b>	<p><b>Jackets:</b> MNP (13500 MT) Launch Type MLQ (2160 MT) Launch Type, MNF-1 Tripod (1000 MT)</p> <p>LTS3000 installed one of the largest process platform jackets (<b>13500MT</b>, 8-legged launch type with 23 pre-installed risers) for MHN Project of ONGC, India.</p>

<b>Project</b>	Zawtika Development Project
<b>Client</b>	PTTEP, Thailand
<b>Installations Completed</b>	<p><b>Pipe Lay:</b> Sea lines WP2 to ZPQ , 19" x 10km, WP3 to ZPQ, 19" x 11km <b>Jacket:</b> WP1 (6726 MT), WP2 (8900 MT) and WP3 (6726 MT) - all launch type <b>Deck:</b> WP1 (1030 MT), WP2 (1200 MT) and WP3 (1200MT)</p> <p>LTS3000 launched <b>143m single-piece pile at 160m water depth</b> to install jackets in Zawtika field, Myanmar.</p>



<b>Project</b>	JDA Gas Balancing Evacuation Project
<b>Client</b>	Trans Thai Malaysia Sdn Bhd, Malaysia
<b>Installations Completed</b>	<p><b>Pipe Lay:</b> 24" x 75km</p> <p><b>Lay rate:</b> 200-220 joints per day (approx. 2.6km per day)</p>

<b>Project</b>	Installation of Offshore Facilities
<b>Client</b>	Murphy Sarawak Oil Co. Ltd.
<b>Installations Completed</b>	<p><b>Deck:</b> SN-PA (2668 MT), SN-AA (1375 MT), SN-PA WHP (248 MT), SA-PA (2595 MT), SA-AA (867 MT), SA-PA WHP Topside (263 MT)</p> <p><b>Flare Boom:</b> SN-PA Flare Boom (49 MT), SA-PA Flare Boom (52 MT)</p> <p><b>Bridge:</b> SN-PA/SN-AA Interconnecting Bridge (54 MT) SA-PA/SA-AA Interconnecting Bridge (52.5 MT)</p>



<b>Project</b>	Transportation and Installation of EMEPMI Offshore Facilities
<b>Client</b>	ExxonMobil Exploration & Production Malaysia Inc (EMEPMI)
<b>Installations Completed</b>	<p><b>Pipe Lay:</b> 28" x 24.5km CRA Pipeline, 28" x 1.5km CRA Pipeline</p> <p><b>Jacket:</b> Telok-A (1627 MT) and Tapis-Q (2054 MT)</p> <p><b>Deck:</b> Tapis-A (1680 MT) and Tapis-Q (2254 MT)</p>



Since 2010 – when LTS3000 was commissioned – up to September 2014, it has installed 65 offshore structures and laid 203 kilometres of sub-sea pipe line in various oil fields in India, Malaysia, Indonesia, Myanmar and Vietnam.

#### CONTACT DETAILS

*Kaustuv Bagchi*

Tel: +91 22 6705 3709 Fax: +91 22 6705 1246

Email: kb@Lntenc.com

*C. Phanindhar*

Tel: +91 22 6705 9087 Fax: +91 22 6705 1246

Email: phanindhar@sapurakencana.com



**L&T Hydrocarbon**



**SapuraKencana**  
PETROLEUM

#### **L&T Sapura Shipping Private Limited**

L&T Business Park, 5th Floor, TC-II, Tower B, Gate No.5

Saki-Vihar Road, Powai, Mumbai - 400 072, INDIA

Website: [www.Lntsapura.com](http://www.Lntsapura.com)

Email: [marketing@Lntsapura.com](mailto:marketing@Lntsapura.com)

#### *Registered Office*

Mount-Poonamallee Road, P. O. Box 979,  
Manapakkam, Chennai - 600 089, INDIA

CIN: U61100TN2010PTC077217